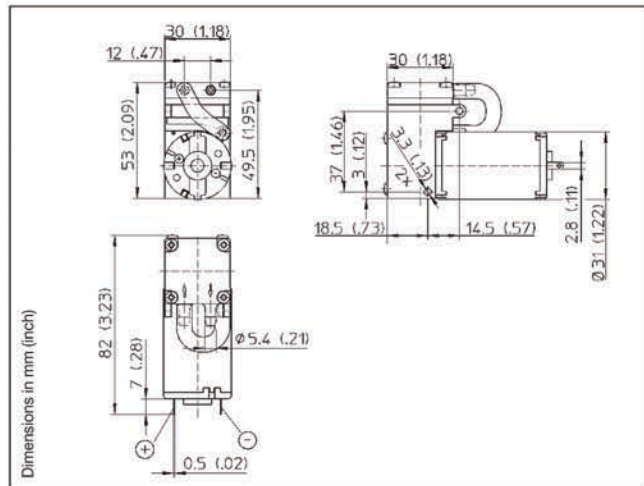
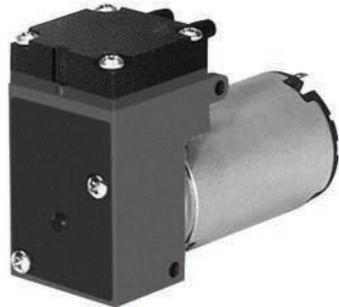


WOB-L Piston Compressor 8003D DC

Flow 3,0 l/min

Max. pressure 2,0 bar

АНАЛИТИКА-СЕРВИС



Pneumatic Data

Description	8003D/22/1,2/E/DC	8003D/24/1,2/E/DC
12 V DC	80030054	80030055
24 V DC	80030057	80030058
Max. flow	2,5 l/min	3,0 l/min
Max. pressure	2,0 bar	2,0 bar
Max. continuous pressure	1,0 bar	0,8 bar
Max. restart pressure	1,0 bar	0,8 bar

Electrical Data

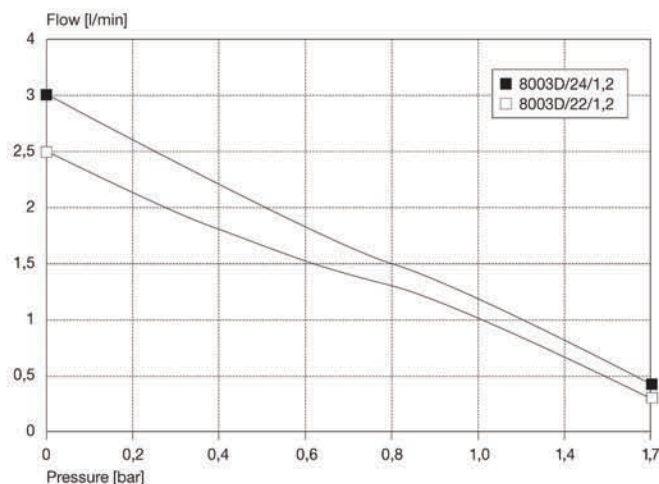
Motor type	Direct current	Direct current
Nominal voltage	12 V/24 V DC	12 V/24 V DC
Nominal speed	3000 rpm	3000 rpm
Power consumption	7,5 W	8,5 W
Motor insulation class	A	A

General Data

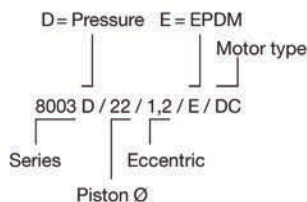
Ambient temperature	10 to 40 °C	10 to 40 °C
Media temperature	10 to 60 °C	10 to 60 °C
Weight	0,19 kg	0,19 kg
Port direction	D	D

All listed values measured at standard atmospheric conditions.

Flow Curves



Model key:



8003... Stock programme

Option:
Low cost DC-motor

The information presented in this material is based on technical data and test results of nominal units. It is believed to be accurate and reliable and is offered as an aid to help in the selection of Thomas products. It is the responsibility of the user to determine the suitability of the product for the intended use and the user assumes all risk and liability whatsoever in connection therewith. Thomas does not warrant, guarantee or assume any obligation or liability in connection with this information.