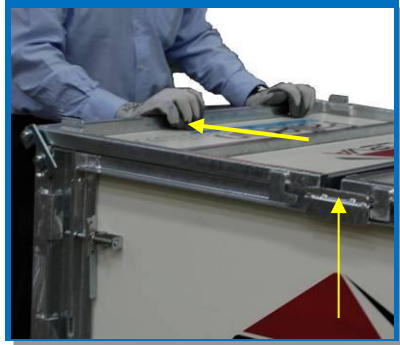




1. When the Autoflow<sup>3</sup> is empty and the liner has been removed, we fold the unit for return



2. The Lids slide back towards the operator to free them from the side location brackets



3. Then the Lids are folded back to hang down against the end panels



4. The Drop Side Door should be closed. Fold "UP" and Lift over the two notches in the frame. The Latches should now be locked and closed flat



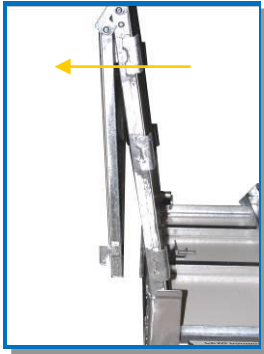
5. The Side panels are unlocked by releasing the 2 latches, the Side is then "eased" in at the bottom to clear the cleats, and then lowered flat



6. Use the Handle to lower the side panel - protect your back!



7. Repeat for the second side



8. Fold the Gate by first "pushing" it AWAY from the unit



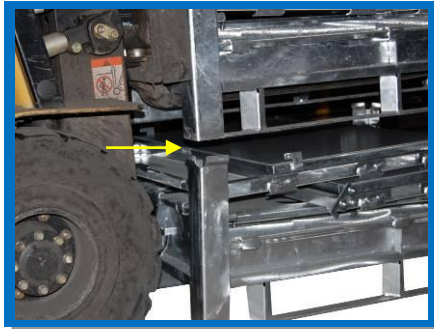
9. This releases the Gate Frame from the Cleats – and prevents expensive damage



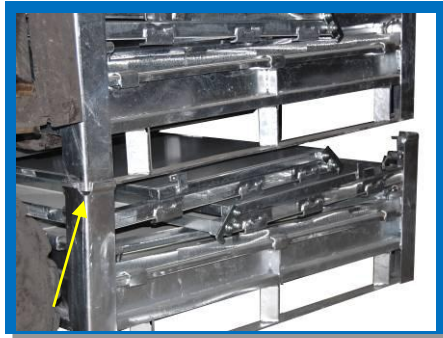
10. The panels are folded down



11. The Autoflow<sup>3</sup> is flat and ready for stacking with an FLT



12. Stacking the Autoflow<sup>3</sup> safely is simple. The FLT brings the unit to be stacked in "square" to those underneath, with just a small vertical gap – back tilt applied



13. The back tilt allows the FLT driver to gently lower the unit(s) until the corner post "nestles" into the shaped cup at the top of the (underneath) corner post



14. By removing the back tilt, the FLT driver has now securely located all four corners of the upper Autoflow<sup>3</sup> onto the lower unit.



15. This exercise is repeated until the units are in a stack of 5